

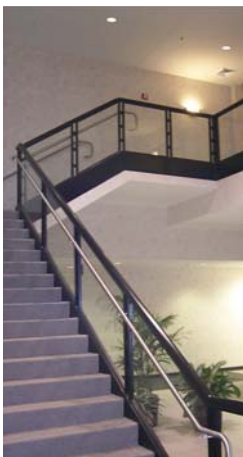
300 Park Place

Clearwater, FL



Project Summary

- Client
Clinton International Group
- Location
300 Park Place Blvd.
Clearwater, FL
- Project Size
2 Stories
101,000 Square Feet
- Building Systems
Tilt-Up Panels w/ Integral Color
Structural Steel Floor Framing



Project Highlights

This 101,000 square foot multi-tenant facility was anchored by Verifone, a division of Hewlett Packard. The shell building consisted of an integral colored structural tilt-up concrete wall system. The exterior finish was created using 100% white cement and native Florida stone creating a warm white finish that required minimal long term maintenance. The final step in the finish process was a sandblasting to highlight the native stone.

Concrete tilt-up was chosen as the prime structural element based on its durability, initial cost and exceptional wind resistance. The panels feature a high degree of architectural relief which further enhances the appeal of the building's design.

As the primary tenant, Verifone occupied 63,200 square feet of space. The interior build out, managed by R.R. Simmons, included traditional interior components with the addition of extensive cabling requirements, redundant power supply and a sophisticated LAN center. Due to the tenant's need for prompt deployment, a phasing approach was utilized. This provided the tenant with early access to the technology centers for set-up and testing.